



Turning the Ordinary into the Extraordinary

www.PivotCorp.com



Enhanced Pop-Up Store Starbucks® Cart Series

Version 3.0

Product Guide

January 1, 2023



Table of Contents

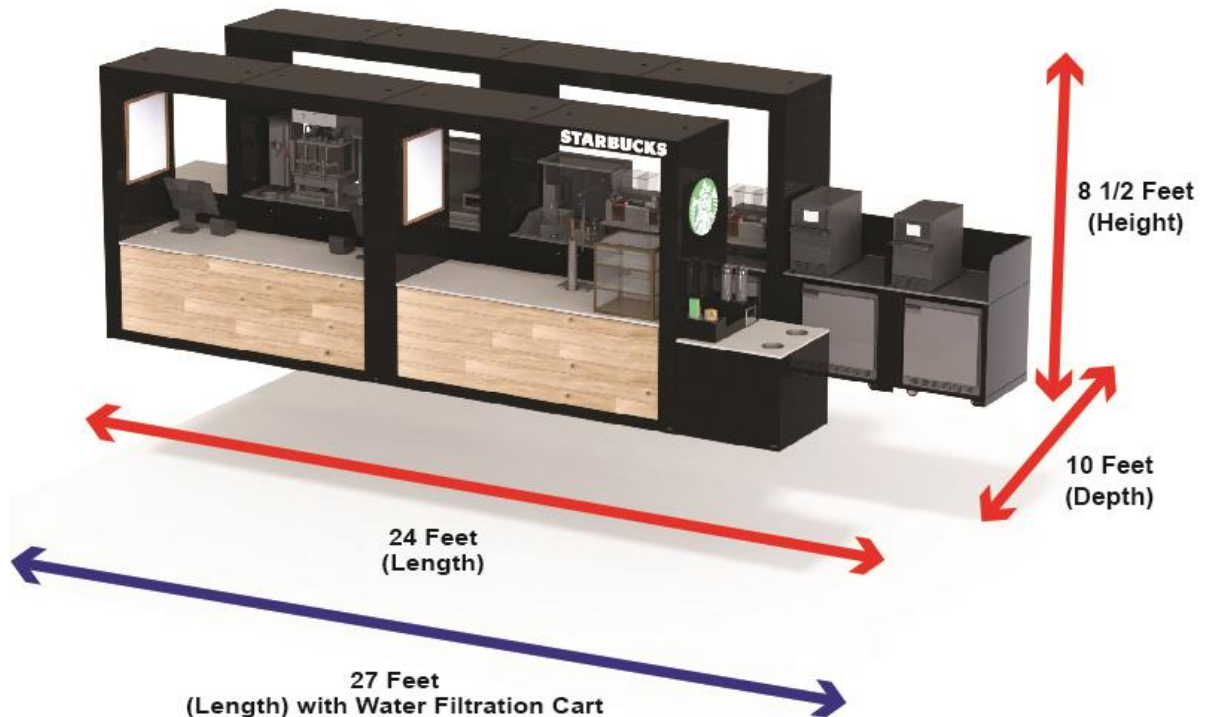
Store Overview	4
PVC10-SBUX-CAFE-CBS1	7
PVC10-SBUX-CAFE-MST1	7
PVC10-SBUX-CAFE-POS3	8
PVC10-SBUX-CAFE-HNT1	8
PVC10-SBUX-CAFE-SCW1	9
PVC10-SBUX-CAFE-CND1	9
PVC10-SBUX-CAFE-SCF1	10
UL Certification.....	11
Specifications	12
Front View.....	12
Rear View	12
Left View.....	13
Right View.....	13
Top View with Canopy	14
Top View without Canopy	14
Store Utilities.....	15
Electrical.....	15
Water Supply.....	17
Sanitary.....	18
Site Preparation	20
Site Preparation Plan – Without Water Filtration Cart.....	20
Site Preparation Plan – With Water Filtration Cart.....	21

PROPRIETARY AND CONFIDENTIAL INFORMATION. 2023 PIVOT LLC. All rights reserved. Other company and product names mentioned herein are property of their respective owners. The contents of this publication are subject to change without notification and are the property of and cannot be reproduced without the written permission of PIVOT LLC. The contents of this publication are not a commitment by PIVOT LLC to provide the products and services described.



Store Overview

The Starbucks Enhanced Pop-Up Store is a Cart based Store platform designed, engineered, and manufactured by PIVOT. This Store is comprised of 7 (8 with the Optional Water Filtration Cart) Modular Carts and offers a large platform Starbucks Store that is easily deployed and quickly installed. This Store requires minimal site preparation and is ideal for use as a Temporary Store.



This Store measures approximately 24 feet in length (27 feet in length with the Optional Water Filtration Cart) by 10 feet in depth by 8 ½ feet in height. Please note that this space does not include space for customer queuing/circulation and merchandizing which should be used in the final space calculation. Please also note that this Enhanced Pop-Up Store does require a back of house to operate.





This Enhanced Pop-Up Store is finished on all sides and can reside against a back wall or room center with 360 degrees of exposure. This Store is completely self-contained and requires just main utility hook ups.

This Starbucks Enhanced Pop-Up Store features.

- Espresso Station supporting Qty 2 Mastrena I or Mastrena II
- Brew Station supporting a Dual Brewer, Grinder, Server Stand and Servers
- Cold Beverage Station supporting blended drinks
- Double Warming Station which includes an Qty 2 Oven, Qty 2 27-inch undercounter refrigerator and warming racks



- QTY 2 – 48-inch Refrigerators
- Double POS Station
- Nitro and Cold Brew Draft Station
- Integrated Bakery Rack
- Countertop Ambient
- Hand Sink, Work Sinks and Drain Boards
- 90lb draining Ice Bin with Pump
- Innovative Hutch Cockpit for improved operations on both Rear Carts
- Support for Mobile Order Pickup
- Condiment Cart with integrated trash bins
- LED Illuminated Signage on the front and both sides of the Store
- Qty 2 Menus integrated into the Box Canopy of both Front Carts for a total of Qty 4 Menus
- Integrated LED recessed ceiling lights
- Multiple Dry Locking Storage Compartments with Shelves
- Furniture-Grade Oak Veneer – Updatable
- Beautiful Quartz and 304-Stainless Steel Countertops with Marine Edge
- PIVOT's proven Utility Engine under the hood
- Full Water Filtration System (Config I or Config III) included with the Optional Water Filtration Cart
- Complete electrical system with Load Center
- Premium powder coated metal construction
- All Carts are UL Listed – US & Canada
- A Turnkey *plug 'n play* solution

This Store is comprised of 7 (8 with the Optional Water Filtration Cart) Modular Carts. Each Cart can function independently or combined, in this sense, to form the Enhanced Pop-Up Store. As such, each Cart carries its own UL Listing, Product Code, Utility Requirements and Equipment Package. Each Cart also has its own Product Guide that you will find attached to this Store Product Guide.

When the Carts are combined to form the Enhanced Pop-Up Store, the Utilities are simplified to single main utility lines feeding the store, not the individual Carts. The Carts are designed to hook into each other for Utilities. The Rear Carts are the main Utility hub for the Store.



PVC10-SBUX-CAFE-CBS1

This Cart is a Rear Cart for the Enhanced Pop-Up Store.



This Cart is also a Utility hub for the Store.

PVC10-SBUX-CAFE-MST1

This Cart is a Rear Cart for the Enhanced Pop-Up Store.



This Cart is also a Utility hub for the Store.



PVC10-SBUX-CAFE-POS3

This Cart is a Front Cart for the Enhanced Pop-Up Store.



This Cart is used as the main transaction point for the Store supporting two POS stations.

PVC10-SBUX-CAFE-HNT1

This Cart is a Front Cart for the Enhanced Pop-Up Store.



This Cart is used as a hand off plane featuring a Nitro and Cold Brew draft station and countertop ambient.



PVC10-SBUX-CAFE-SCW1

This Cart is a Side Cart providing Warming to the Enhanced Pop-Up Store. This Store utilizes two of these Carts.



PVC10-SBUX-CAFE-CND1

This Cart is a Side Condiment Cart for the Enhanced Pop-Up Store.



This Cart can also be used as an alternative Hand Off if needed for ADA purposes.



PVC10-SBUX-CAFE-SCF1

This Cart is an Optional Side Cart providing Water Filtration to the Enhanced Pop-Up Store.



UL Certification

The Carts that comprise the Starbucks Enhanced Pop-Up Store are UL Listed in both the United States and Canada.



You can find our listing on the UL Directory under our file number KNNS.E475132 for the United States and KNNS7.E475132 for Canada, or by following these links (or copy and paste them into your favorite internet browser).

UNITED STATES

http://database.ul.com/cgi-bin/XYV/template/LISEXT/1FRAME/showpage.html?name=KNNS.E475132&ccnshorttitle=Custom-built+Food+Service+Equipment&objid=1084945455&cfgid=1073741824&version=versionless&parent_id=1073989156&sequence=1

CANADA

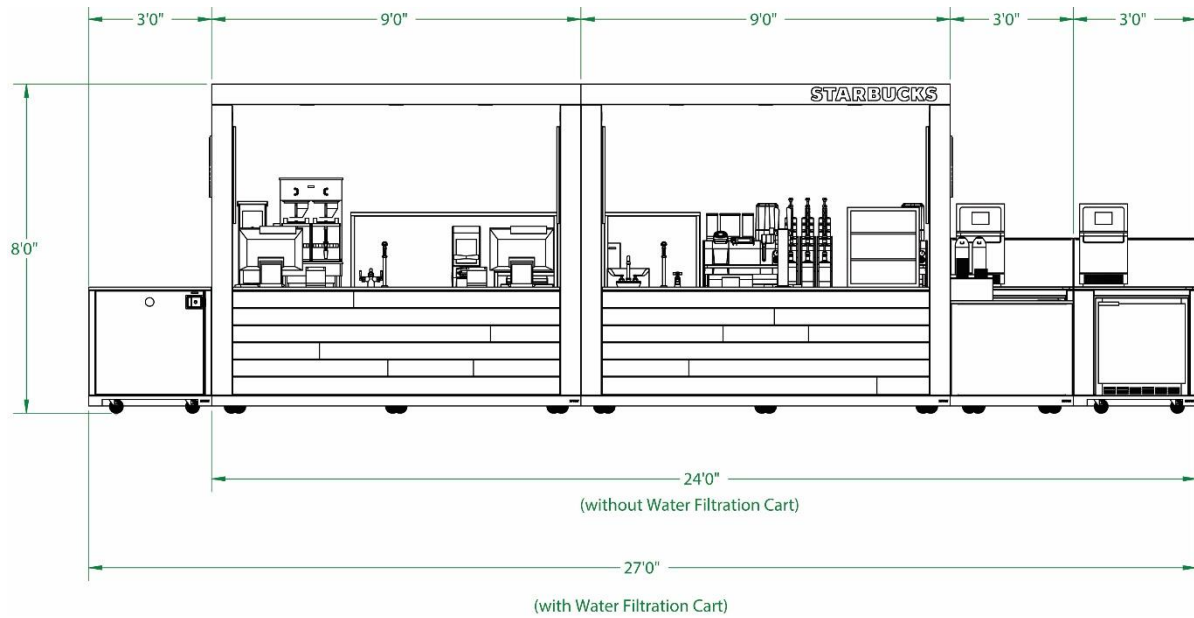
http://database.ul.com/cgi-bin/XYV/template/LISEXT/1FRAME/showpage.html?name=KNNS7.E475132&ccnshorttitle=Custom-built+Food+Service+Equipment+Certified+for+Canada&objid=1084945460&cfgid=1073741824&version=versionless&parent_id=1073989158&sequence=1



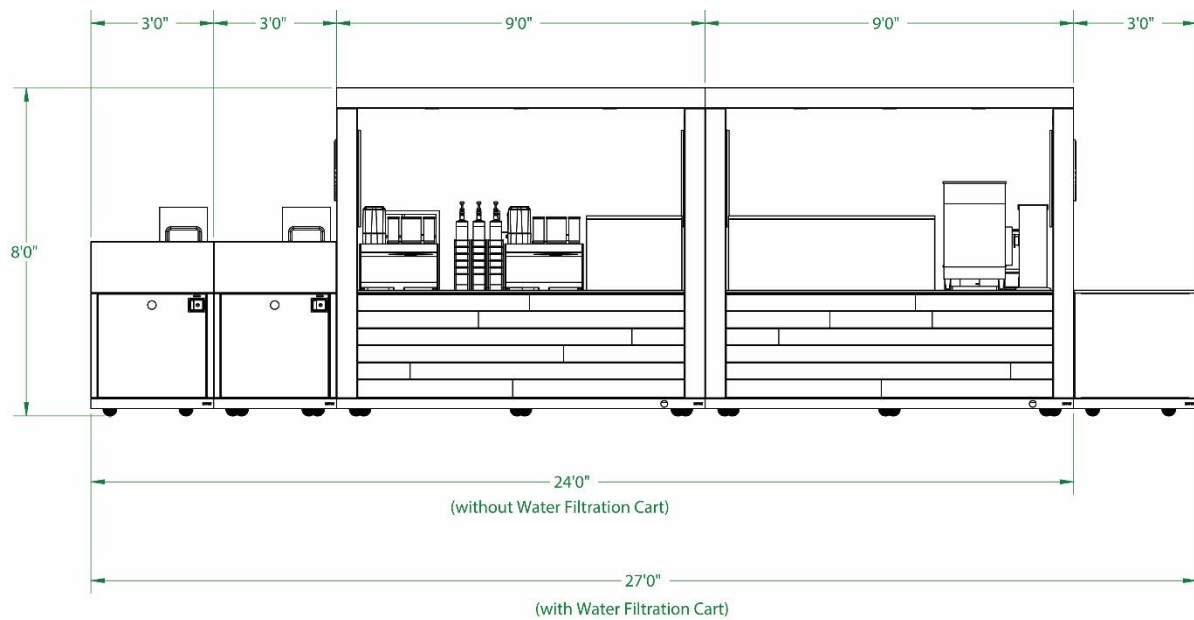
Specifications

The Enhanced Pop-Up Store measures approximately 24 feet in length (27 feet in length with the Optional Water Filtration Cart) by 10 feet in depth (shown below is the minimum distance between the Front and Rear Carts – the recommended distance adds an additional 8 inches to the depth putting this depth closer to 10 feet) and 8 ½ feet in height (this Store measure 8 feet in height but requires a minimum ceiling height of 8 ½ feet for installation). Exact dimensions are shown below.

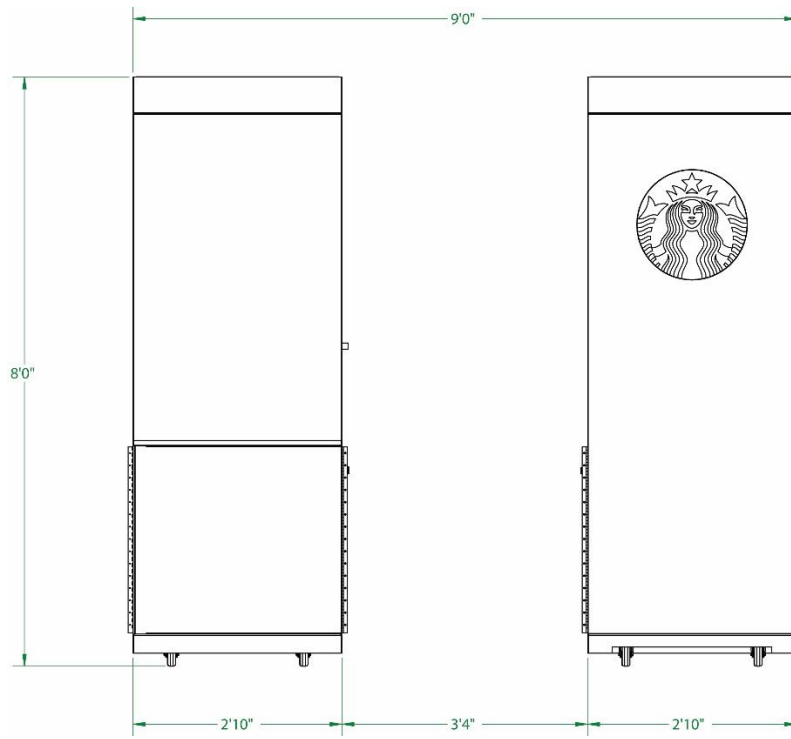
Front View



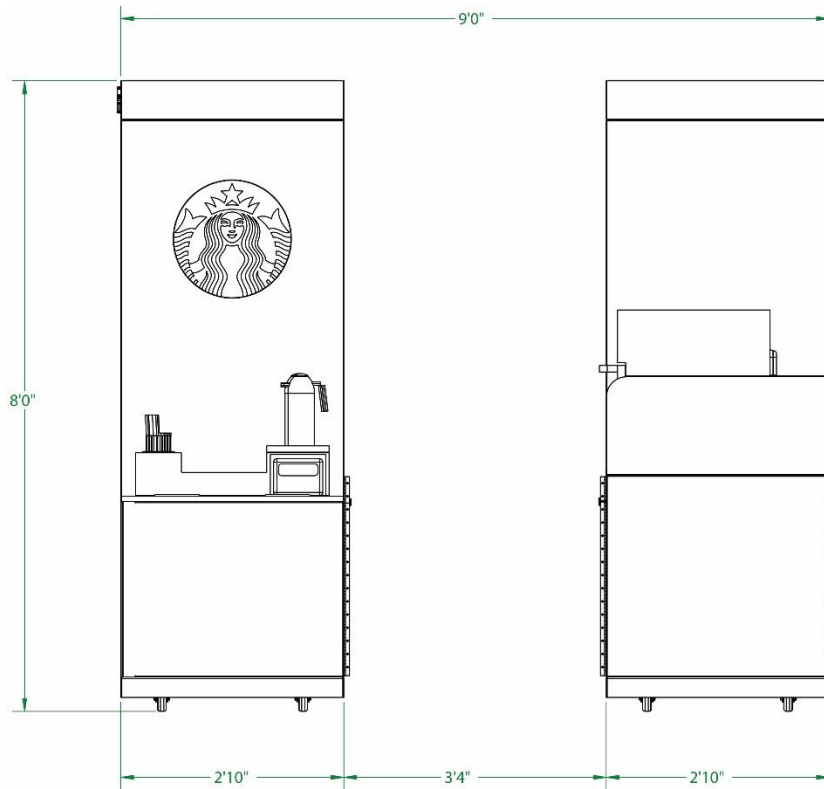
Rear View



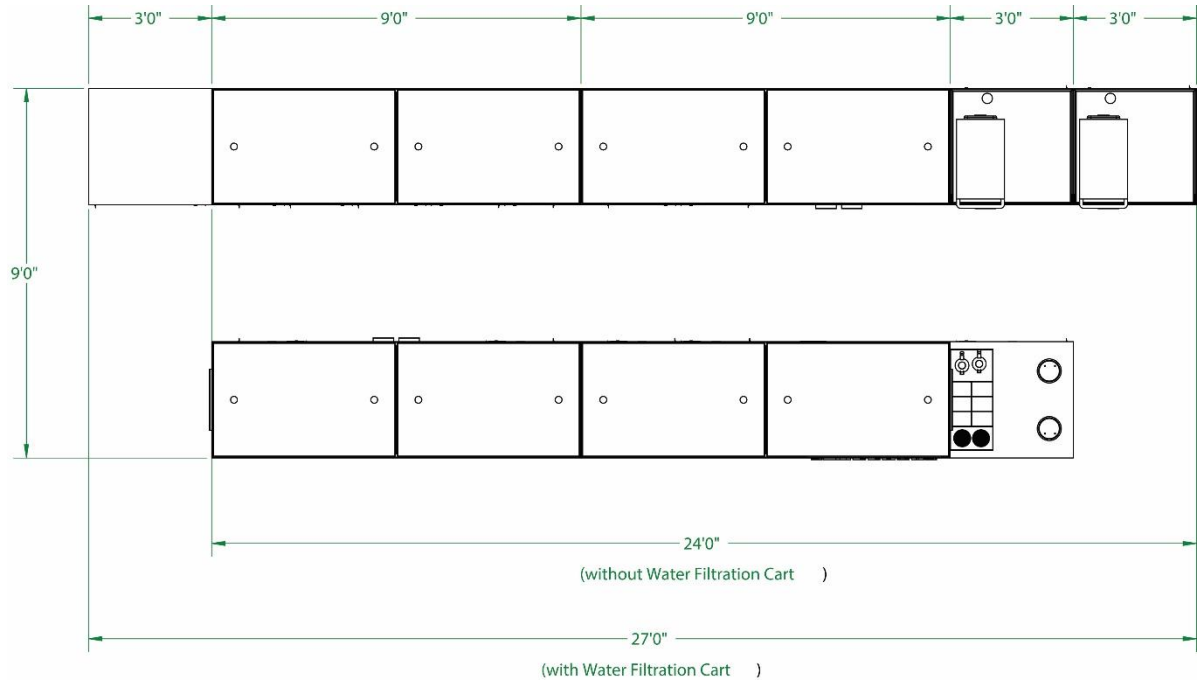
Left View



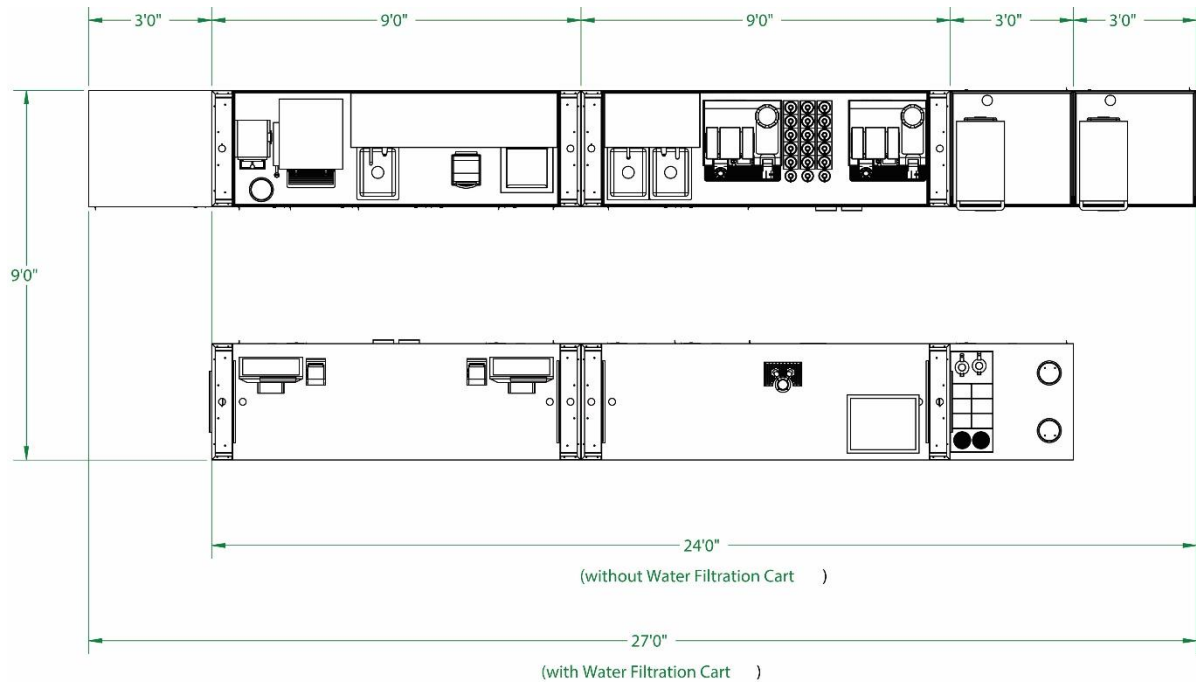
Right View



Top View with Canopy



Top View without Canopy



Store Utilities

The Starbucks Enhanced Pop-Up Store requires single, main Utility lines that connect to the Rear Carts (and the Optional Water Filtration Side Cart if included). These Utilities include: Electric, Water Supply and Sanitary.



The Utility Compartments of the Rear Carts are shown above. These Utility Compartments contain the main engine that drives this Store. PIVOT has developed this engine over many iterations and years to provide this optimal performance.

Electrical

This Enhanced Pop-Up Store requires Qty 2 - 3 Phase 120/208V 60AMPS of Electric Service (one for each Rear Cart). This Pop-Up Store has been designed to provide an optimal portable Store platform. As such, the Rear Carts come equipped with an SO Cord used to connect to the main electric service. This provides electric service to the entire Enhanced Pop-Up Store.





These SO cords are comprised of a 4 Gauge/5 Wire S00W power cord terminated by a Hubbell HBL560P9W 60AMP Male AC Connector and measures approximately 10 feet in length (from the Rear of the Cart to the end of the Hubbell plug). Please note that these cords are very heavy and rigid.

At the desired service location (stub out location), the customer is responsible for providing and installing the appropriate receptacle for these Carts to plug into. The matching receptacle for the above male Hubbell connector is the Hubbell HBL560R9W 60AMP Female AC Receptacle shown to the right.



Alternatively, depending on the site and use needed, S00W cables can be used with the Hubbell HBL560C9W 60AMP Female AC Connector to connect the Carts.

Another option is using a Mechanical Interlock which offers the benefit of having a disconnect. The fused version is HBL560MIF9W and the unfused version is HBL560MI9W from Hubbell.



As an alternative, PIVOT does have an optional accessory that can be purchased to make the installation of the on-site electrical even easier – the PIVOT Jockey Box.

This Jockey Box is a pre-configured junction box with unistrut for mounting. This box contains the Hubbell receptacle mounted to the bottom and wired to a terminal block installed inside of the box. This Jockey Box is designed specifically for these Carts providing 3 Phase 120/208V 60AMPS. This Jockey Box should be installed by a licensed and certified electrician. Please note that this Jockey Box must be mounted 24 to 36 inches above the ground without obstruction to the receptacle on the bottom as the SO cords from the Rear Carts will plug into this receptacle.



For the Enhanced Pop-Up Store, you will need to have Qty 2 of these Jockey Boxes to support each Rear Cart.

It is the customer's responsibility to meet local jurisdictional codes and to have the proper receiving receptacles/connectors installed by a licensed electrician prior to the installation of the Carts. Changes to this standard setup must be communicated and agreed prior to ordering the Carts from PIVOT. PIVOT takes no responsibility for meeting local jurisdictional code requirements.

Detailed Electrical specifications for each Cart are located in their respective Product Guides attached to this Store Product Guide.

Water Supply

This Starbucks Enhanced Pop-Up Store requires Filtered Water as the Water Supply to this Store. PIVOT recommends that this Filtered Water line terminate in a hose bibb (lead-free rated for potable water) at the connection point (stub out location) to connect to the main water supply of each Rear Cart. A hose splitter should be installed on this hose bibb to split the water to supply to support each Rear Cart (connected to the Rear Cart Water Manifold).



Alternatively, a Water Filtration Cart can be added to this Enhanced Pop-Up Store to provide a Config I or Config III Water Filtration System to the Store. Utilizing this configuration, City Water (hard water) can be terminated to the hose bibb mentioned above.





A Fresh Water Supply Hose can be used to connect this hose bibb to the water inlet of this Side Cart. Fresh Water Supply Hoses can be used to connect the water outlet of this Side Cart to the Rear Cart's Water Manifold located inside of the Utility Compartment of each Rear Cart.

Alternatively, you can hard pipe the water supply to the water inlet of the Water Filtration Cart or to each Rear Cart's Water Manifold.

Detailed Water Supply specifications for each Cart are located in their respective Product Guides attached to this Store Product Guide.

Sanitary



Sanitary for the Enhanced Pop-Up Store is provided using Drain Pumps located in the Utility Compartment of each Rear Cart. These Drain Pumps are ½-HP and has great head height (up to approximately 35 feet) and supports high temperatures (up to 180F).

This system is designed to provide a low-cost and effective alternative to trenching plumbing lines and installing floor sinks. This is a proven system with hundreds of installations from large box stores to casinos.



Alternatively, you can install a floor drain or floor sinks under each Rear Cart for Sanitary.

Detailed Sanitary specifications for each Cart are located in their respective Product Guides attached to this Store Product Guide.

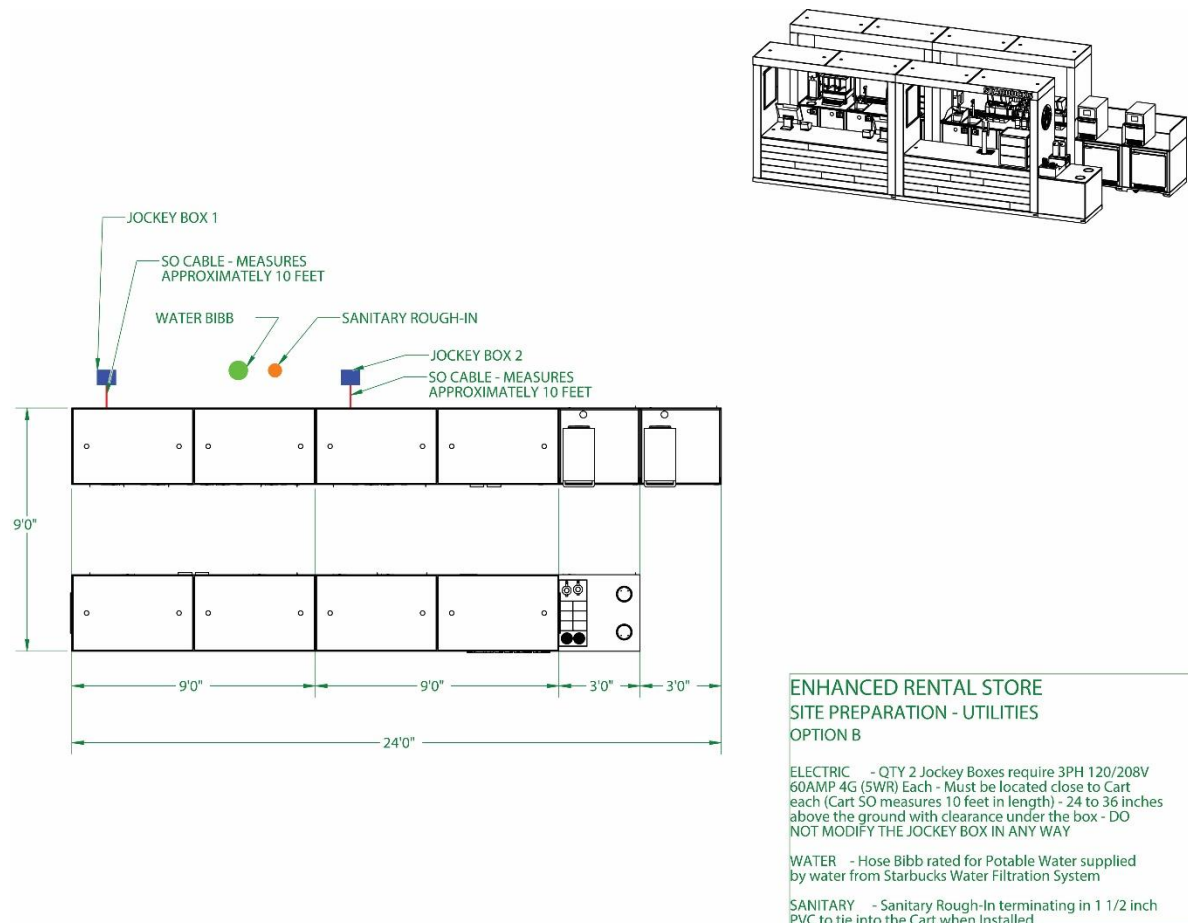


Site Preparation

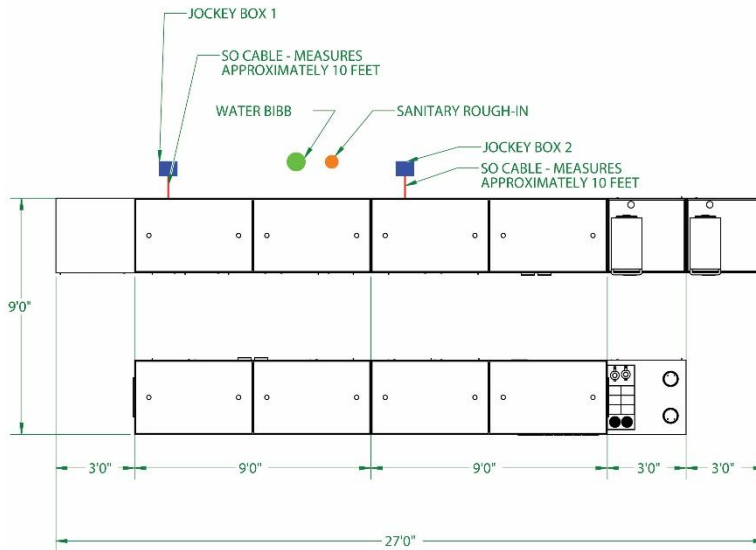
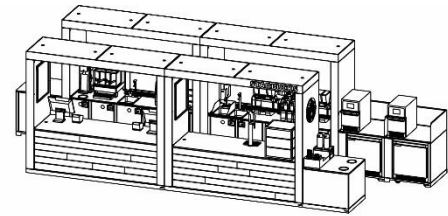
The Starbucks Enhanced Pop-Up Store requires minimal Site Preparation. This Site Preparation includes:

1. **Hard Floor** – This Enhanced Pop-Up Store must be installed on a hard, mopable floor to pass Health inspection
2. **Electric** – Qty 2 - 3 Phase 120/208V 60AMP 4G 5WR – Receptacles or PIVOT Jockey Boxes.
3. **Water Supply** – Hard or Filtered Water – terminated to a Hose Bibb (lead free rated for potable water)
4. **Sanitary** – Stub Outs –1 ½ inch PVC SCH 40 terminating in a WYE to connect to the Drain Pump in each Utility Compartment located in the Rear Carts

Site Preparation Plan – Without Water Filtration Cart



Site Preparation Plan – With Water Filtration Cart



ENHANCED RENTAL STORE SITE PREPARATION - UTILITIES OPTION C

ELECTRIC - QTY 2 Jockey Boxes require 3PH 120/208V 60AMP 4G (5WR) Each - Must be located close to Cart each (Cart SO measures 10 feet in length) - 24 to 36 inches above the ground with clearance under the box - DO NOT MODIFY THE JOCKEY BOX IN ANY WAY

WATER - Hose Bibb rated for Potable Water supplied by hard water

SANITARY - Sanitary Rough-In terminating in 1 1/2 inch PVC to tie into the Cart when Installed

