



Turning the Ordinary into the Extraordinary

www.PivotCorp.com



Standard Plus Pop Up Store Starbucks® Cart Series

Version 1.0

Product Guide

January 1, 2023



Table of Contents

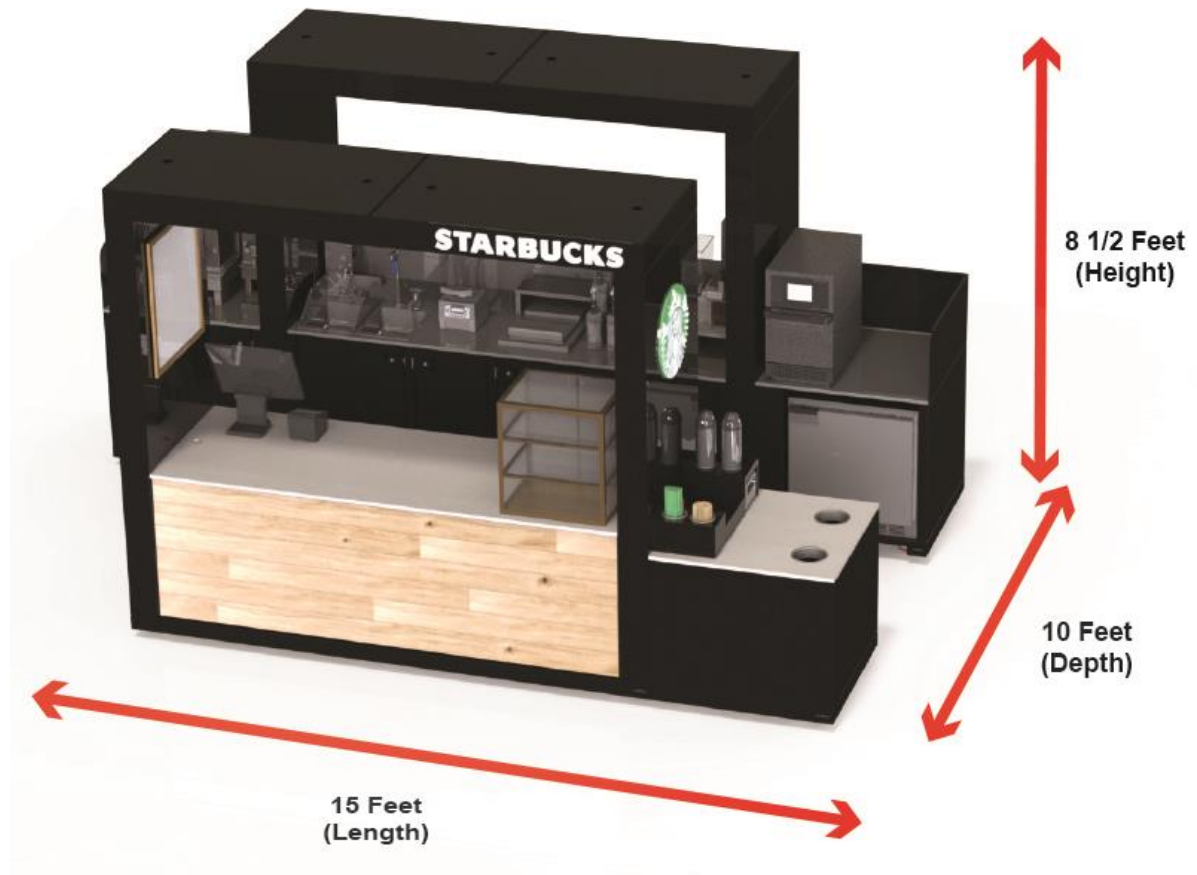
- Store Overview 4
 - PVC10-SBUX-CAFE-CMC1 7
 - PVC10-SBUX-CAFE-POS1 7
 - PVC10-SBUX-CAFE-SCW1 8
 - PVC10-SBUX-CAFE-SCB1 8
 - PVC10-SBUX-CAFE-CND1 9
- UL Certification..... 10
- Specifications 11
 - Front View 11
 - Rear View 11
 - Left View 12
 - Right View..... 12
 - Top View with Canopy 13
 - Top View without Canopy 13
- Store Utilities..... 14
 - Electrical..... 14
 - Water Supply 16
 - Sanitary 17
- Site Preparation 18

PROPRIETARY AND CONFIDENTIAL INFORMATION. 2023 PIVOT LLC. All rights reserved. Other company and product names mentioned herein are property of their respective owners. The contents of this publication are subject to change without notification and are the property of and cannot be reproduced without the written permission of PIVOT LLC. The contents of this publication are not a commitment by PIVOT LLC to provide the products and services described.



Store Overview

The Starbucks Standard Plus Pop Up Store is a Cart based Store platform designed, engineered, and manufactured by PIVOT. This Store is comprised of 5 Modular Carts and offers a small platform Starbucks Store that is easily deployed and quickly installed. This Store requires minimal site preparation and is ideal for use as a Temporary Store or in a Hub & Spoke design for a permanent Starbucks Store.



This Store measures approximately 15 feet in length by 10 feet in depth by 8 ½ feet in height. Please note that this space does not include space for customer queuing/circulation and merchandizing which should be used in the final space calculation. Please also note that this Standard Plus Store does require a back of house to operate.





This Standard Plus Store is finished on all sides and can reside against a back wall or room center with 360 degrees of exposure. This Store is completely self-contained and requires just main utility hook ups.

This Starbucks Standard Plus Store features.

- Espresso Station supporting the Mastrena I or Mastrena II
- Brew Station supporting a Brewer, Grinder, Server Stand and Servers
- Cold Beverage Station supporting blended drinks
- Warming Station which includes an Oven, 27-inch undercounter refrigerator and warming racks
- Single POS Station
- Countertop Ambient
- Hand Sink, Work Sink and Drain Board
- 90lb draining Ice Bin with Pump
- Innovative Hutch Cockpit for improved operations
- Support for Mobile Order Pickup
- Condiment Cart with integrated trash bins
- LED Illuminated Signage on the front and both sides of the Store
- Two Menus integrated into the Box Canopy
- Integrated LED recessed ceiling lights
- Dry Locking Storage Compartments with Shelves
- Furniture-Grade Oak Veneer – Updatable
- Beautiful Quartz and 304-Stainless Steel Countertops with Marine Edge
- PIVOT's proven Utility Engine under the hood
- Complete electrical system with Load Center
- Premium powder coated metal construction
- All Carts are UL Listed – US & Canada
- A Turnkey *plug 'n play* solution

This Store is comprised of 5 Modular Carts. Each Cart can function independently or combined, in this sense, to form the Standard Plus Store. As such, each Cart carries its own UL Listing, Product Code, Utility Requirements and Equipment Package. Each Cart also has its own Product Guide that you will find attached to this Store Product Guide.

When the Carts are combined to form the Standard Plus Store, the Utilities are simplified to single main utility lines feeding the store, not the individual Carts. The Carts are designed to hook into each other for Utilities. The Main Rear Cart is the main Utility hub for the Store.



PVC10-SBUX-CAFE-CMC1

This Cart is the Main Rear Cart for the Standard Plus Store.



This Cart is also the main Utility hub for the Store. All the other Carts in this Store connect to this Cart for Utilities.

PVC10-SBUX-CAFE-POS1

This Cart is the Main Front Cart for the Standard Plus Store.



This Cart is used as the main transaction point for the Store supporting a single POS station.



PVC10-SBUX-CAFE-SCW1

This Cart is a Side Cart providing Warming to the Standard Plus Store.



PVC10-SBUX-CAFE-SCB1

This Cart is a Side Cart providing Brew and Water Filtration to the Standard Plus Store.



PVC10-SBUX-CAFE-CND1

This Cart is a Side Condiment Cart the Standard Plus Store.



This Cart can also be used as an alternative Hand Off if needed for ADA purposes.



UL Certification

The Carts that comprise the Starbucks Standard Plus Store are UL Listed in both the United States and Canada.



You can find our listing on the UL Directory under our file number KNNS.E475132 for the United States and KNNS7.E475132 for Canada, or by following these links (or copy and paste them into your favorite internet browser).

UNITED STATES

http://database.ul.com/cgi-bin/XYV/template/LISEXT/1FRAME/showpage.html?name=KNNS.E475132&ccnshorttitle=Custom-built+Food+Service+Equipment&objid=1084945455&cfgid=1073741824&version=versionless&parent_id=1073989156&sequence=1

CANADA

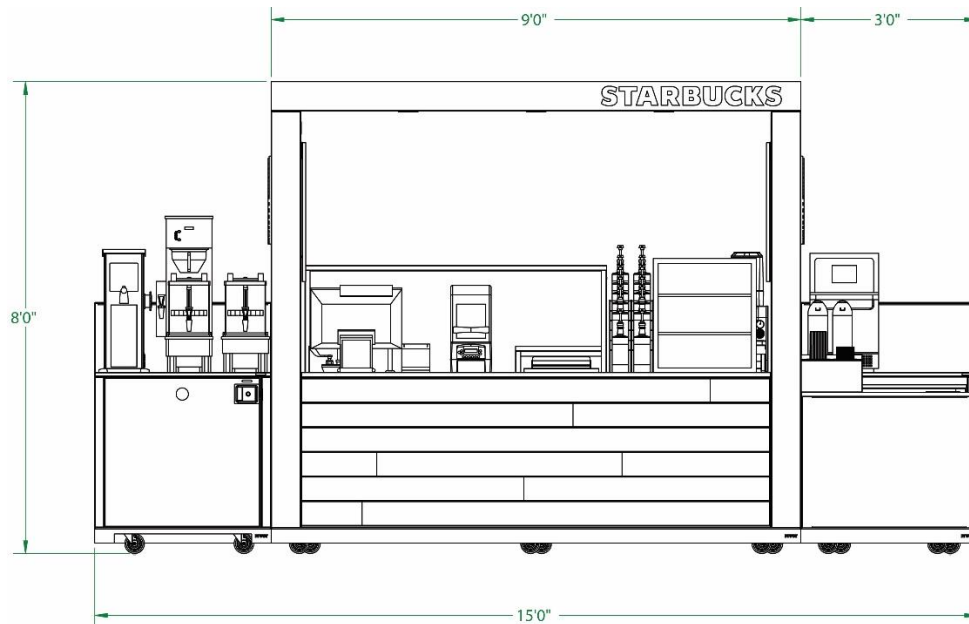
http://database.ul.com/cgi-bin/XYV/template/LISEXT/1FRAME/showpage.html?name=KNNS7.E475132&ccnshorttitle=Custom-built+Food+Service+Equipment+Certified+for+Canada&objid=1084945460&cfgid=1073741824&version=versionless&parent_id=1073989158&sequence=1



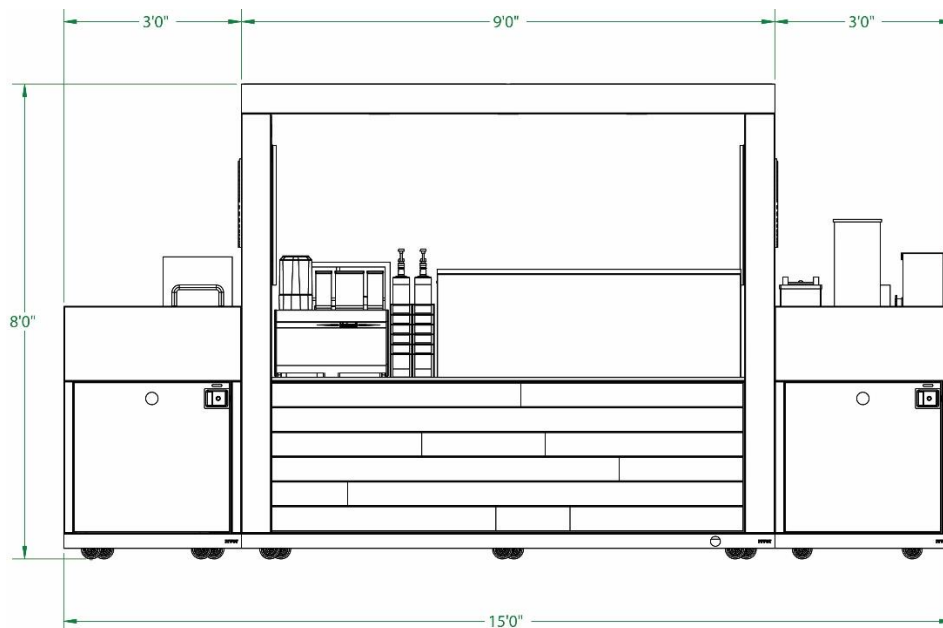
Specifications

The Starbucks Standard Plus Store measures approximately 15 feet in length by 10 feet in depth (shown below is the minimum distance between the Front and Rear Carts – the recommended distance adds an additional 8 inches to the depth putting this depth closer to 10 feet) and 8 ½ feet in height (this Store measure 8 feet in height but requires a minimum ceiling height of 8 ½ feet for installation). Exact dimensions are shown below.

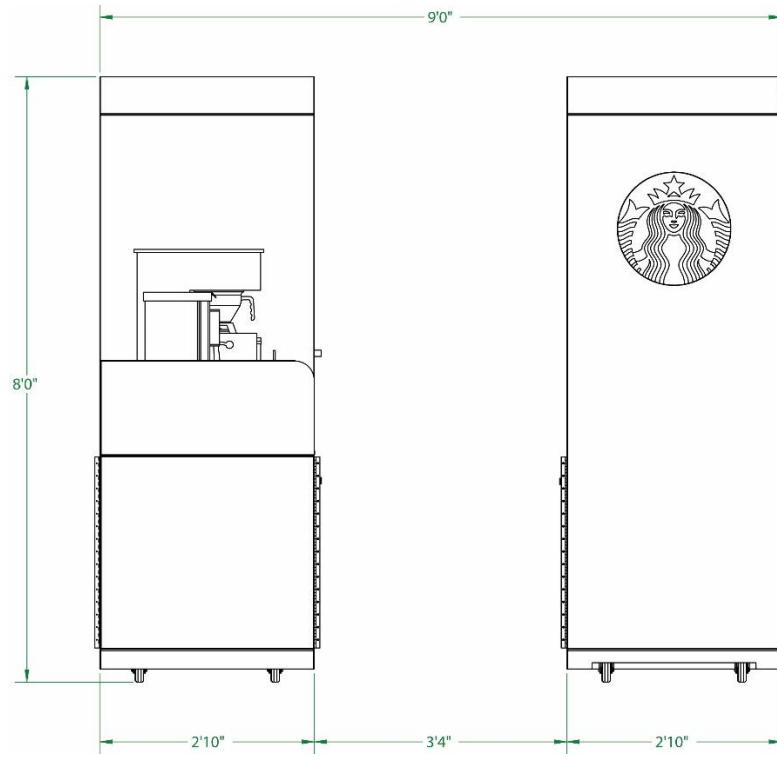
Front View



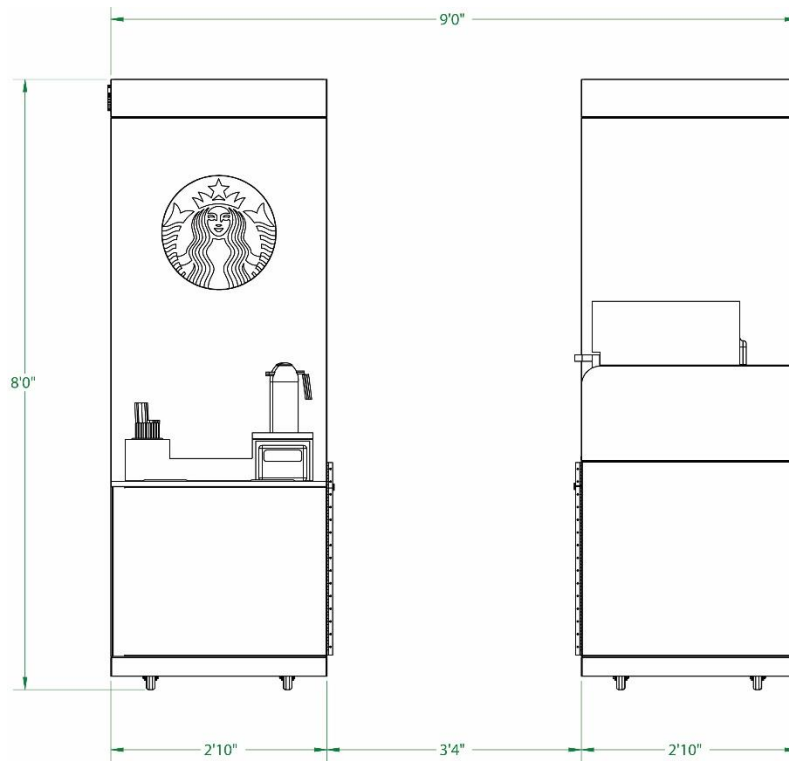
Rear View



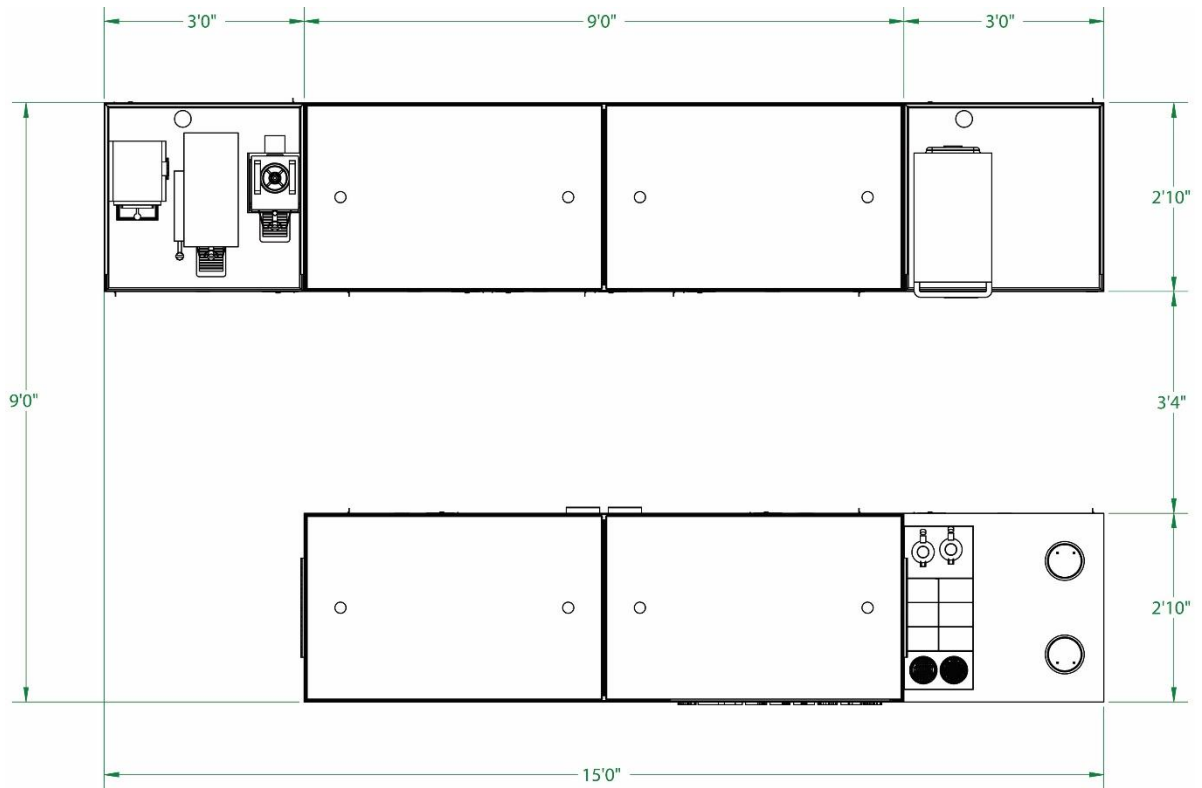
Left View



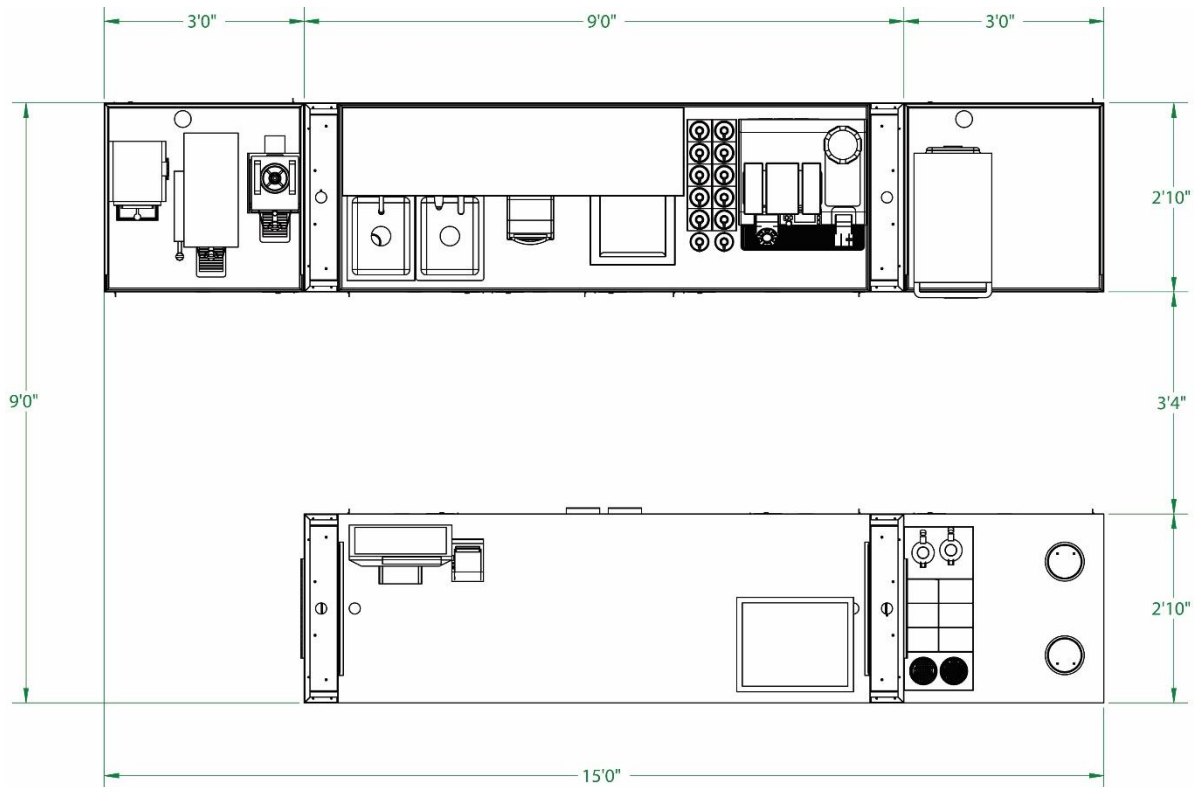
Right View



Top View with Canopy



Top View without Canopy



Store Utilities

The Starbucks Standard Plus Store only requires single, main Utility lines that connect to the Main Rear Cart and the Brew Water Filtration Side Cart. These Utilities include Electric, Water Supply and Sanitary.



The Utility Compartment of the Main Rear Cart is shown above. This Utility Compartment is the main engine that drives this Store. PIVOT has developed this engine over many iterations and years to provide this optimal performance.

Electrical

This Starbucks Standard Plus Store requires 3 Phase 120/208V 60AMPS of Electric Service. This Pop Up Store has been designed to provide an optimal portable Store platform. As such, the Main Rear Cart comes equipped with an SO Cord used to connect to the main electric service. This provides electric service to the entire Standard Plus Store.





This SO cord is comprised of a 4 Gauge/5 Wire SOOW power cord terminated by a Hubbell HBL560P9W 60AMP Male AC Connector and measures approximately 10 feet in length (from the Rear of the Cart to the end of the Hubbell plug). Please note that this cord is very heavy and rigid.

At the desired service location (stub out location), the customer is responsible for providing and installing the appropriate receptacle for this Cart to plug into. The matching receptacle for the above male Hubbell connector is the Hubbell HBL560R9W 60AMP Female AC Receptacle shown to the right.



Alternatively, depending on the site and use needed, a SOOW cable can be used with the Hubbell HBL560C9W 60AMP Female AC Connector to connect the Cart.

Another option is using a Mechanical Interlock which offers the benefit of having a disconnect. The fused version is HBL560MIF9W and the unfused version is HBL560MI9W from Hubbell.



As an alternative, PIVOT does have an optional accessory that can be purchased to make the installation of the on-site electrical even easier – the PIVOT Jockey Box.

This Jockey Box is a pre-configured junction box with unistrut for mounting. This box contains the Hubbell receptacle mounted to the bottom and wired to a terminal block installed inside of the box. This Jockey Box is designed specifically for this Cart providing 3 Phase 120/208V 60AMPS. This Jockey Box should be installed by a licensed and certified electrician. Please note that this Jockey Box must be mounted 24 to 36 inches above the ground without obstruction to the receptacle on the bottom as the SO cord from the Rear Cart will plug into this receptacle.



It is the customer's responsibility to meet local jurisdictional codes and to have the proper receiving receptacle/connector installed by a licensed electrician prior to the installation of the Cart. Changes to this standard setup must be communicated and agreed prior to ordering the Cart from PIVOT. PIVOT takes no responsibility for meeting local jurisdictional code requirements.

Detailed Electrical specifications for each Cart are located in their respective Product Guides attached to this Store Product Guide.

Water Supply



The main Water Supply required to feed the Starbucks Standard Plus Store must be connected to the Brew/Water Filtration Side Cart (PVC10-SBUX-CAFE-SCB1). By nature of the Pop Up Store platform, PIVOT recommends installing a Hose Bibb (shown to the right - lead free rated for potable water) at the connection point (stub out location) to connect the main water supply to this Cart.



A Fresh Water Supply Hose can be used to connect this Hose Bibb to the water inlet of this Side Cart. A Fresh Water Supply Hose can be also used to connect the water outlet of this Side Cart to the Main Rear Cart's Water Manifold located inside of the Utility Compartment.

Your main Water Supply can consist of Hard or Filtered Water. If supplying the Store with Filtered Water, the Brew/Water Filtration Side Cart can be placed in Bypass Mode to bypass the on-board Water Filtration system. If supplying the Store with Hard Water, this Brew/Water Filtration Side Cart can provide a Config I or Config III filtration system to filter the water



appropriately for your Starbucks Store (consult your Starbucks Water Test to see which configuration you need).

Alternatively, you can hard pipe the water supply to the water inlet of the Brew/Water Filtration Side Cart as well as hard pipe the water outlet of the Brew/Water Filtration Side Cart to the Main Rear Cart's Water Manifold system.

Detailed Water Supply specifications for each Cart are located in their respective Product Guides attached to this Store Product Guide.

Sanitary



Sanitary for the Starbucks Standard Plus Store is provided using a Drain Pump located in the Utility Compartment of the Main Rear Cart. This Drain Pump is 1/2HP and has great head height (up to approximately 35 feet) and supports high temperatures (up to 180F).

This system is designed to provide a low-cost and effective alternative to trenching plumbing lines and installing floor sinks. This is a proven system with hundreds of installations from large box stores to casinos.

Alternatively, you can install a floor drain or floor sinks under this Main Rear Cart for Sanitary.

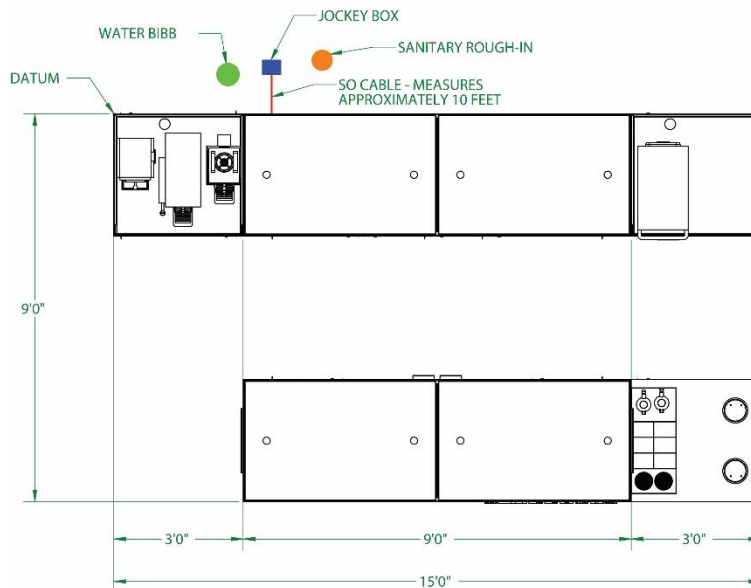
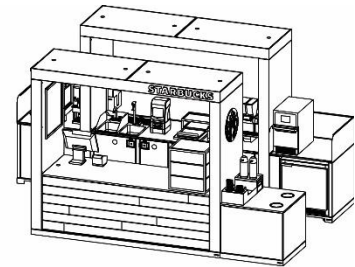
Detailed Sanitary specifications for each Cart are located in their respective Product Guides attached to this Store Product Guide.



Site Preparation

The Starbucks Standard Plus Store requires minimal Site Preparation. This Site Preparation includes:

1. **Hard Floor** – This Standard Plus Pop Up Store must be installed on a hard, mopable floor to pass Health inspection
2. **Electric** – 3 Phase 120/208V 60AMP 4G 5WR – Receptacle or PIVOT Jockey Box.
3. **Water Supply** – Hard or Filtered Water – Hose Bibb (lead free rated for potable water)
4. **Sanitary** – Stub Out – 1 ½ inch PVC SCH 40 to connect to the Drain Pump in the Utility Compartment



STANDARD PLUS STORE SITE PREPARATION - UTILITIES

ELECTRIC - Jockey Box requires 3PH 120/208V 60AMP 4G (5WR) - Must be located close to Cart (Cart SO measures 10 feet in length) - 24 to 36 inches above the ground with clearance under the box

WATER - Hose Bibb rated for Potable Water supplied by Hard or Filtered Water

SANITARY - Sanitary Rough-In terminating in 1 1/2 inch PVC to tie into the Cart when Installed

